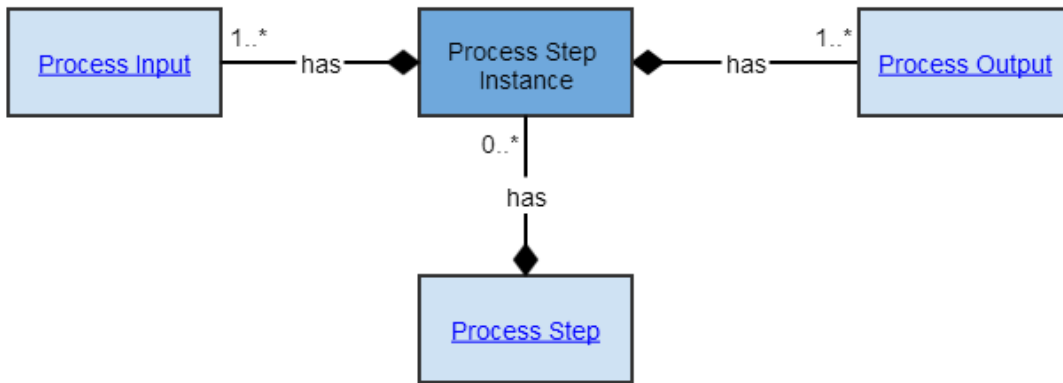


Process Step Instance



Definition

Object	Group	Definition	Explanatory Text	Synonyms
Process Step Instance	Business	An executed step in a <i>Business Process</i> . A <i>Process Step Instance</i> specifies the actual inputs to and outputs from for an occurrence of a <i>Process Step</i> .	<p>Each <i>Process Step</i> is the use of a <i>Process Step Design</i> in a particular context (e.g. within a specific <i>Business Process</i>). At the time of execution a <i>Process Step Instance</i> specifies the actual instances of input objects (for example, specific <i>Data Sets</i>, specific <i>Variables</i>) to be supplied.</p> <p>Each <i>Process Step Instance</i> may produce unique results even though the <i>Process Step</i> remains constant.</p> <p>Even when the inputs remain the same, metrics such as the elapsed time to complete execution of process step may vary from execution to execution. For this reason, each <i>Process Step Instance</i> details of inputs and outputs for that instance of implementing the <i>Process Step</i>.</p> <p>In this way it is possible to trace the flow of execution of a <i>Business Process</i> through all the <i>Process Steps</i> which were involved.</p>	

Attributes

Name	Description	Cardinality	Value Type
Name		1..1	Text
Description		1..1	Text
Start Time	The time a process instance starts.	0..1	Date
End Time	The time a process instance ends.	0..1	Date
Trigger Event	The event which gives the signal to start the process execution.	0..1	Number