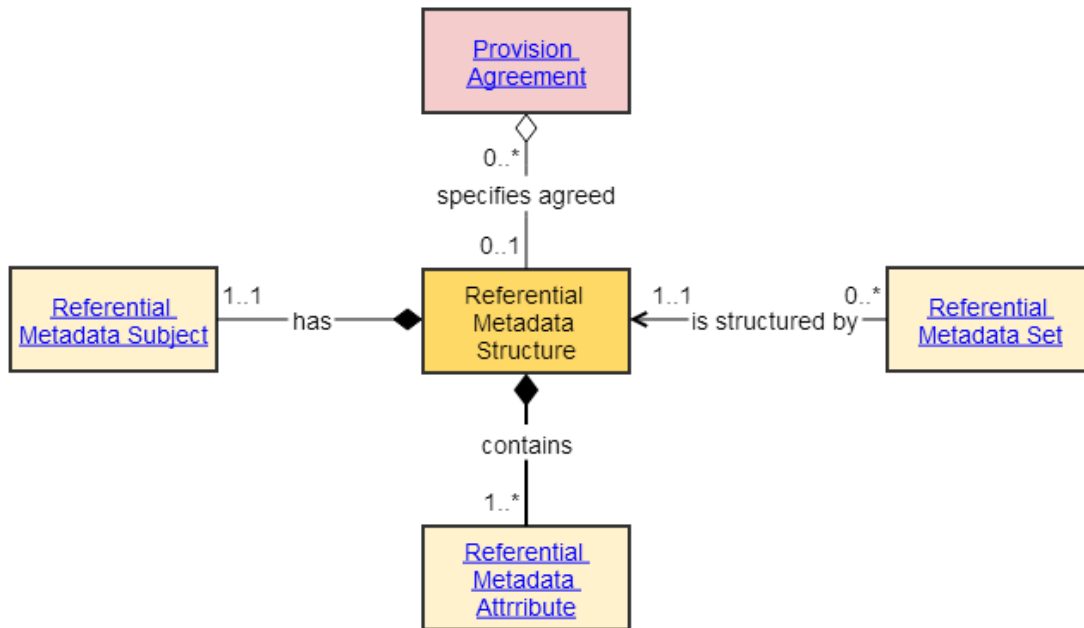


# Referential Metadata Structure



## Definition

Name	Group	Definition	Explanatory Text	Synonyms
Referential Metadata Structure	Structures	Defines the structure of an organized collection of referential metadata ( <i>Referential Metadata Set</i> ).	<p>A <i>Referential Metadata Structure</i> defines a structured list of <i>Referential Metadata Attributes</i> for a given <i>Referential Metadata Subject</i>.</p> <p>Examples of <i>Referential Metadata Attributes</i> are those that describe quality information and methodologies. Examples of subject are: objects like a <i>Questionnaire</i> or a <i>Classification</i>, or collections of data like a <i>Data Set</i>, or any <i>Data Point</i> or set of <i>Data Points</i> created from a specific <i>Data Structure</i>.</p>	Metadata Structure Definition

## Attributes

Name	Description	Cardinality	Value Type
Name		0..1	Text
Description		0..1	Text