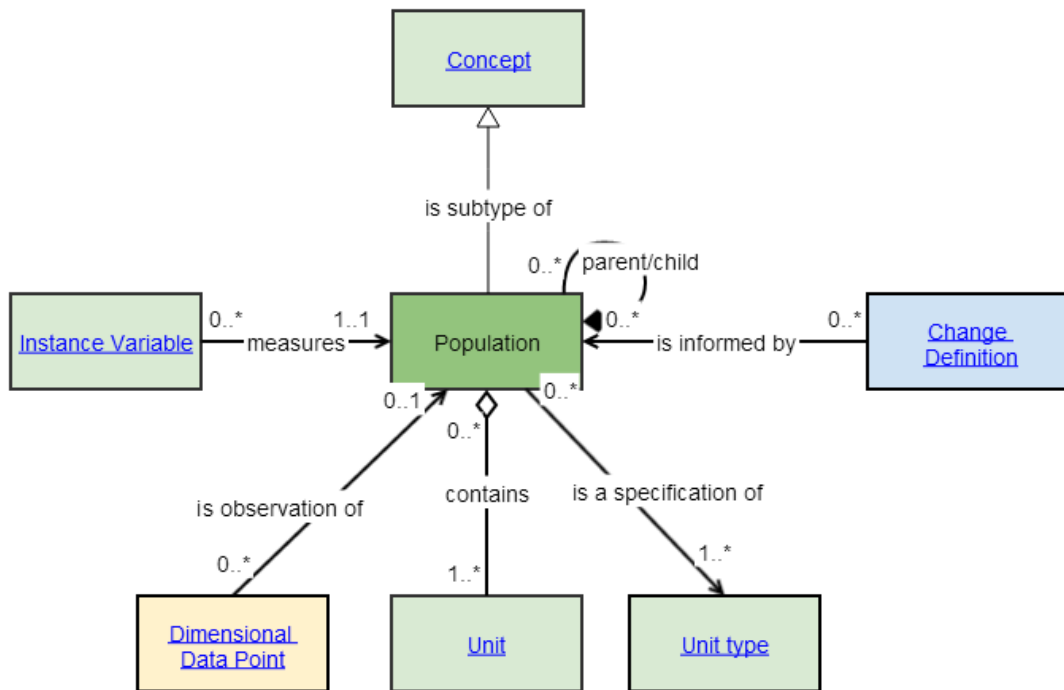


Population



Definition

Object	Group	Definition	Explanatory Text	Synonyms
Population	Concepts	The total membership of a defined class of people, objects or events.	<p>A <i>Population</i> is used to describe the total membership of a group of people, objects or events based on characteristics, e.g. time and geographic boundaries.</p> <p>Here are 3 examples –</p> <ol style="list-style-type: none"> 1. US adult persons on 13 November 1956 2. US computer companies at the end of 2012 3. Universities in the US 1 January 2011. 	

Attributes

Name	Description	Cardinality	Value Type
Name		0..1	Text
Description		0..1	Text
Reference Period	The time period to which the population is associated	0..1	DateRange
Geography	The geographical area to which the population is associated	0..1	Text